



**The Lorin Library
Interactive Smile Style Guide**

Users Manual



Table of Contents

Minimum system requirements.....	3
Installation.....	4
Automatic installation procedure.....	4
Manual installation procedure.....	4
First Run.....	5
Subsequent Runs.....	7
Registration.....	8
Using the iSSG.....	9
Step One.....	10
Step Two.....	11
Cuspid Comparisons.....	12
Step Three.....	13
Smile Style.....	14
Indexes.....	15
Smile Style index.....	15
Portrait index.....	15
Definition of terms.....	16

Minimum system requirements

The iSSG CD gives you the option of installing either the full version or the lite version the iSSG. The iSSG lite will give you all the functionality of the full version except that you will not be able to print your selected Smile Style. The full version is much more demanding of your computer resources and may not run at an acceptable speed on slower computers. The computer requirements listed below will give you guidelines for which version you should install.

Processor:	Intel Pentium or compatible for iSSG lite, Pentium 3 for full version
RAM:	128 MB for iSSG lite, 512MB for full version
Display:	1024 x 768 resolution, 16-bit High Color recommended
Operating System:	Microsoft Windows 98, 98 SE, ME, NT 4.0 with Service Pack 6, 2000, XP
Drives:	CD-ROM drive
Mouse:	Microsoft mouse or other compatible pointing device

Installation

Automatic installation procedure

Place the Interactive Smile Style Guide (iSSG) CD into your CD drive. The installation program will begin automatically.

If your computer is set so that auto-install is not allowed, click the **Start** button, click **Run** and type “D:\iSSG.exe” (without the quotation marks) where D represents the drive letter of your CD ROM. Click the **OK** button. When the installation window opens, click the appropriate button to install either the full version or iSSG lite. Installation should continue automatically; click **Next** on each installation screen. Click **Finish** to complete the installation and launch the program.

Occasionally the installation program will conflict with other programs running in the background and will not run or will freeze your computer. If your computer freezes press the Ctrl, Alt, and Del keys at the same time. Click on the iSSG installation program and then click **End Task**. You will need to install the program manually.

Manual installation procedure

1. Place installation CD into CD drive.
2. When auto install starts up, click the **Exit** button.
3. Click the Windows **Start** button.
4. Click **Run**.
5. Click **Browse**.
6. To the right of the “Look in” box, click the down arrow.
7. In the list that appears look for “iSSG (x)” where x will be your CD drive letter.
8. Click iSSG (x). This places iSSG in the “Look in” box and displays below the files and folders on the CD.
9. **Do not** click on the iSSG file. Double-click the iSSG or the iSSGLite **folder** (a little folder icon shows to the left of the folder name). This opens the contents of the folder.
10. Click on **setup** or **setup.exe**.
11. Click the **Open** button.
12. Click **OK**. Installation should begin.

First Run

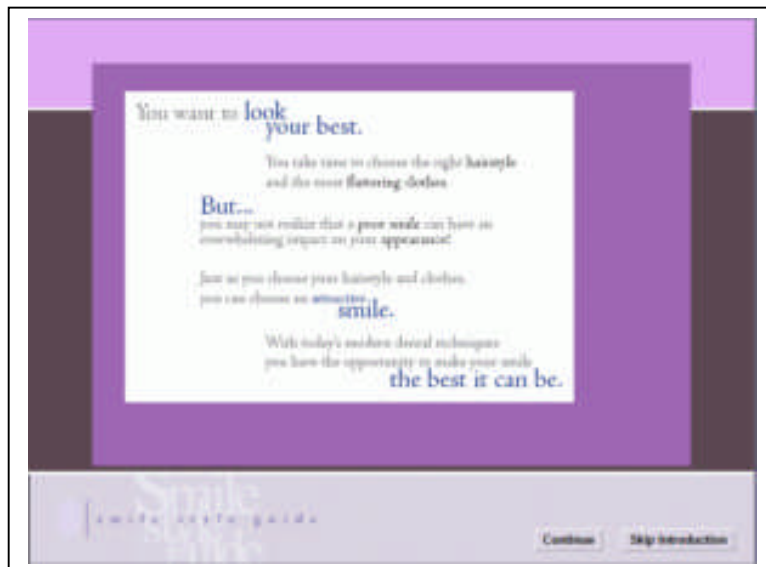
The first time the program starts it will take you to the license agreement. Please read the agreement carefully. If you agree, click the **Yes, I agree** button and continue to use the program. If you do not agree, click **No, I disagree**. The program will close.



If you clicked the **Yes, I agree** button the program takes you to the iSSG title page. You are given the option of starting the program 30 times before registering. The title page shows you the number of “Starts” you have remaining. You may register at any time by clicking on the **Registration** button located on the lower right side of the title page. Once you register the program it cannot be returned.



To begin designing a smile, click either the **Begin iSSG** or **Skip Introduction** buttons. The **Begin iSSG** button will bring you to the introduction section of the program.



The **Skip Introduction** button will take you directly to the Cuspids Selection page.



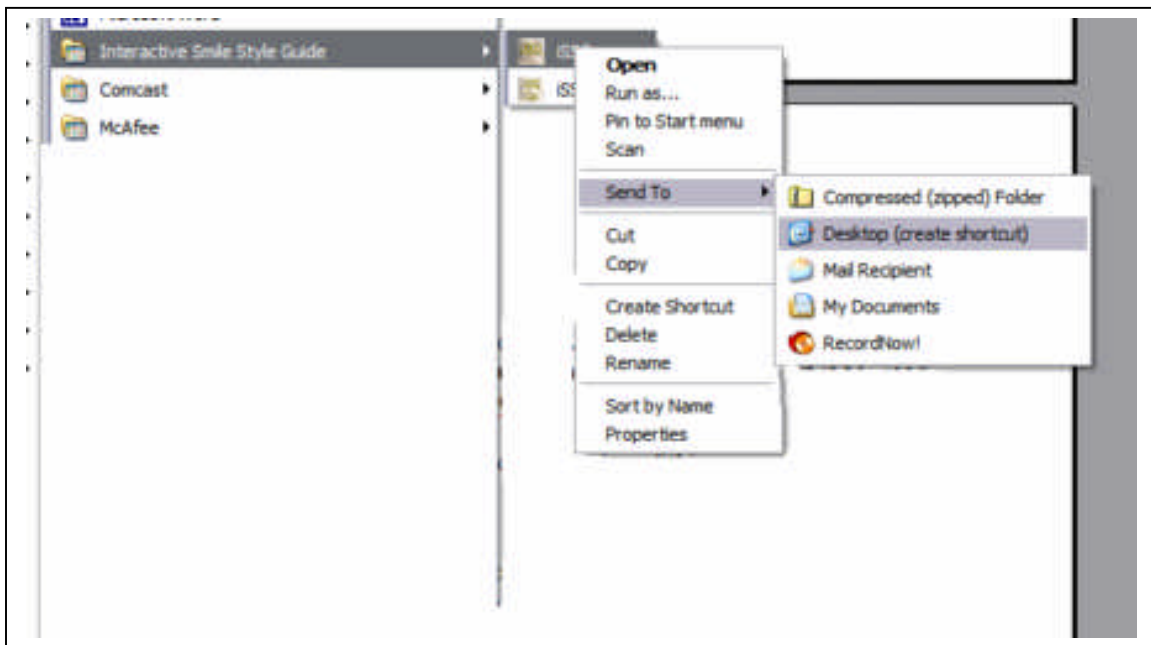
Use the *buttons* and *tabs* to navigate iSSG. **For help**, move your cursor over the star-shaped **Help** button located in the lower left corner of each scene.

You can **minimize** the program just like any other Windows based program. To reactivate the program after minimizing, click the iSSG button in the Windows Taskbar. When the program maximizes, click on the iSSG title bar to activate its interactive features.

Subsequent Runs

For subsequent launches of the program, click the Windows **Start** button, select **All Programs**, find **Interactive Smile Style Guide** and click **iSSG**.

To make a shortcut to launch the program from a desktop icon, find the iSSG program in the Start menu as you did above, right-click **iSSG** and then from the menu that appears, select **Send to**. Click **Desktop (create shortcut)**. This will place a shortcut iSSG icon on your desktop from which you will be able to launch the iSSG.



Registration

You may start the program 30 times without registering. To obtain your registration code either call Digident Monday through Thursday during normal working hours EST or email us at support@digident.com.

You will need to give us your name, address, phone number, date of purchase, and the registration number printed on the back of the CD cover. If you are emailing, tell us the date you wish to register your program. If you are calling us, be prepared to enter the registration code the day you call. We will give you a registration code. This code must be entered into the white field exactly as given on the date described above. Press the Enter key and then click on the **Finish Registration** button.



You may install the iSSG and use the same registration code on as many computers in one location as you would like on the day of registration. You will not be able to register further copies without additional fees.

After registration the program will return to the title page. To confirm registration was successful, you will notice that the number of "Starts" is no longer disclosed and the **Registration** button no longer appears.



Using the iSSG

The Smile Style Guide is the best way to select the shapes of the teeth for your esthetic cases. Whether you are doing crowns, bridges, veneers or dentures, choosing the shapes of the teeth in the esthetic zone is a must for patient satisfaction. Shape selection can be tedious and confusing. Using the iSSGs 3-step interactive process takes a complicated decision-making process and makes it easy.

The iSSG is appropriate for all personality types. However you need to be able to use it differently for each type. Some patients will be detailed oriented. Be sure to carefully point out to these patients the specifics of the shape differences we are demonstrating. Other patients are driven more by emotion. These patients should be asked to look at the entire design and report only if they like it or not. Allowing these people to study the details will confuse them. Some patients will want to spend time with each design deliberating and conferring with you. Others will make their decisions decisively and spontaneously. It is your job to take your lead from the patient and use the iSSG in a way that fits the patient's personality.

You will invariably have patients who will insist that "you are the doctor, you know best, you choose". This can be a dangerous patient. They are certain to have preferences they just don't know it yet. Introduce them to the iSSG by admitting that you do know best. That you have selected several shapes that you feel will all look great. Communicate to them that if they have a preference from among the choices you have made this tool will help determine it. If they do not demonstrate a preference, then you will indeed choose for them.

Step One

Step One is selecting the Cuspid Shape. It begins by showing the 3 typical shapes of the cuspid. You and your patient can view a large version of each design by moving the cursor over the 3 thumbnail photos of the cuspids.

Have the patient decide which shape they like best and make the selection by clicking the mouse over the thumbnail of that cuspid. The cuspid shape selected will define the **Cuspid Category**.



The cuspids here are demonstrated with non-specific incisor shapes and lengths. You will be selecting the shapes and lengths of the incisors in later steps and will be able to see and change the cuspid selection if necessary.

On this page you will notice on the lower left a star-shaped icon. Running your cursor over the star will open a help box. This help-star appears on many pages and will function the same wherever you see it.

The last shape selected will appear in red, to the right of the star. Buttons are available to allow you to go back to the introduction pages, to go immediately to an index of all the Smile Styles, and to quit the program.



Step Two

Step Two is selecting the Incisor Shape Combination. Each combination is defined by the shape of the mesial and distal incisal edges of all 4 incisors. The page opens showing you the 6 tabs representing the 6 variations of the shapes of the 4 incisors. The 6 variations are called **Incisor Shape Combinations (ISC)**. The Cuspid Category you chose in step one appears just below the tabs.



As you move your cursor over the green tabs you will see each ISC as it appears with your chosen cuspid from both front and side views. A label will appear along with each photo describing the ISC. Have your patient focus on the anterior view to determine if they like the look. If they like a particular ISC have them look at the side view only to confirm that they like it from this view as well.



If the patient likes more than one shape combination, have them make their final choice by viewing all the options with the “See All” tab.

At this point you may have second thoughts about the Cuspid Category you selected. You can see how each cuspid shape looks with your selected ISC by **right-clicking** the green tab.

To make a selection and move to step three, click on the green tab of your choice. The combination of Cuspid Category and ISC is called the **Smile Design**.



Cuspid Comparisons

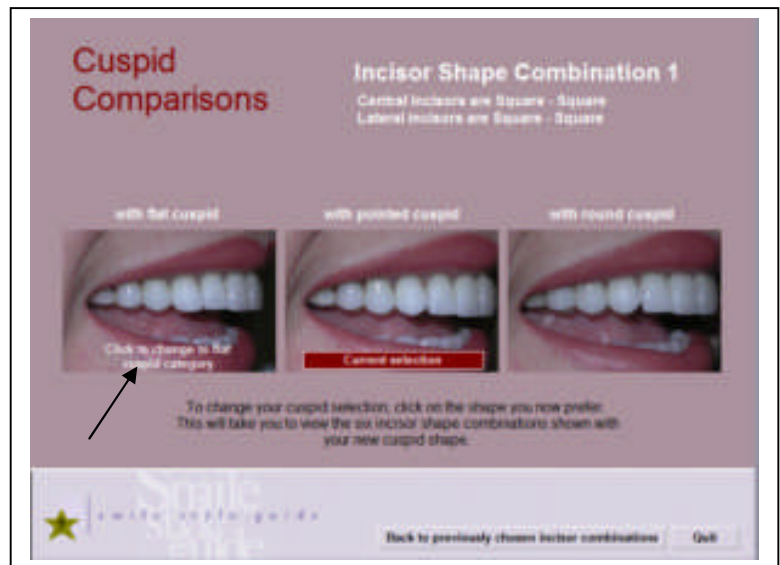
If you decided to see your chosen ISC as it appears with all three cuspid shapes the Cuspid Comparison screen will open.

The current Cuspid Category choice will be labeled with a red tag. If the patient feels the chosen ISC looks better with a different cuspid shape, they can change their choice here.



Change the Cuspid Category choice by clicking on either of the other cuspid shapes. Clicking an alternate cuspid will return you to the ISC selection page of the new Cuspid Category.

You can go back to the original Cuspid Category ISC selection page by either clicking on the original cuspid (red tag) or clicking the **Back to previously chosen incisor combination** button.



Step Three

By clicking the green tab in the ISC selection page the program moves to Step Three. Here you will be choosing the **Relative Length** of the incisors.

The page is initially displayed with your selections from steps one and two at the top: Cuspid Category and Incisor Shape Combination. The heading bar lists all the length variations as Length Codes and the View All options.

There are 4 length variations, each designated with a “Length Code” 1 through 4. View each length option individually by placing your cursor over the Length Code name in the heading bar.

Have the patient decide if they like the look as you progress through each length option. Have the patient make their final choice between the options they like by viewing them all with the “View All” options. Clicking the Length Code label will bring you to an enlarged view of your final **Smile Style**.



Smile Style

Your final selection is the combination of Cuspid Category, Incisor Shape Combination, and Relative Length. This combination is called a **Smile Style**. There are buttons to view the Smile Style from the side view and from a portrait view of either a male or female model.

There are options to go back to the length code selection page, to view an index of all the Smile Styles, and to start the selection process over.

In the full version of the iSSG there is a button to print the Smile Style from the front and side view.

Because length variations are quite subtle, especially when viewing the portrait, the patient will have trouble discriminating the differences in a static photo. The red Smile Style designations on the left of the portrait screen will enable you to quickly compare one Smile Style to another within your chosen Smile Design. This allows you to easily compare how the length variations affect the Smile Style.

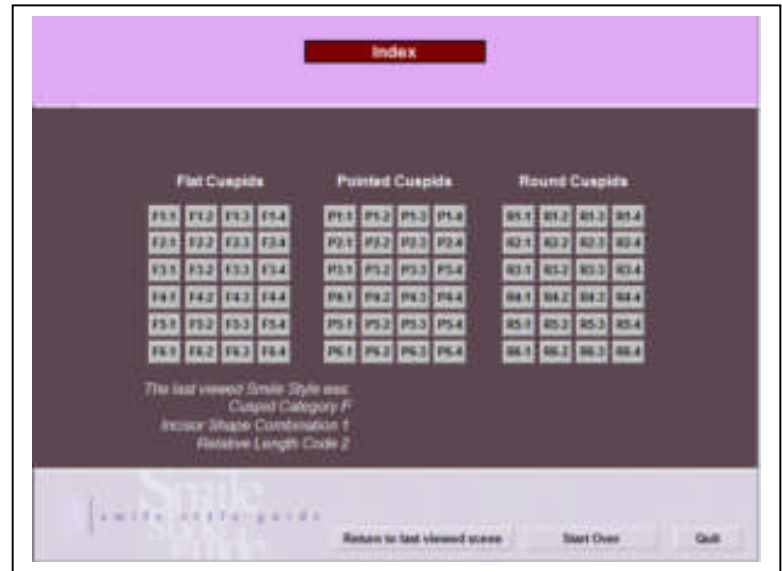
You will also be able to access a portrait index where you can quickly view any of the Smile Design groups or return to the front view of the Smile Style.



Indexes

Smile Style index

The Smile Style index page enables you to quickly move to any Smile Style by clicking on its designation. This page will display your last chosen Smile Style and will allow you to “Start Over” or “Quit” the program.



Portrait index

There is a male portrait index and a female portrait index. It enables you to quickly move to any portrait Smile Design group by clicking on its designation. This page will display your last chosen Smile Style and will allow you to “Start Over”, “Quit” the program, or move to the other gender portrait index.



Definition of terms

Cuspid Category

The choice of Cuspid Category is the first step in the SSG shape selection process. The incisal third of the Cuspids can be said to have 3 general shapes: round, pointed and flat. The selection of one of these shapes defines the Cuspid Category. All further tooth selections will be seen with this shape cuspid.

Incisor Shape Combination (ISC)

The choice of Incisor Shape Combination is the second step in the SSG shape selection process. The mesial and distal incisal edges of incisors can be said to have 2 basic shapes: round or square. The combination of these shapes as seen in the central and lateral incisors defines the Incisal Shape Combination.

Cuspid Comparison

You chose the ISC based on the cuspid shape you chose in step one. You may not be sure of your cuspid selection after choosing the ISC. You may view your ISC choice with all three cuspid shapes in the Cuspid Comparisons pages.

Relative Length of Incisors

The third step in the SSG shape selection process is choosing the relative length of the incisors. Here you can see the effect of the changes in length on tooth shape. Lengths will vary from all the same to the central incisor prominence.

Smile Design

The Smile Design is the combination of Cuspid Category and Incisor Shape Combination.

Smile Style

The Smile Style is the final smile choice which includes the Cuspid Category, Incisor Shape Combination, and Relative length choice.

